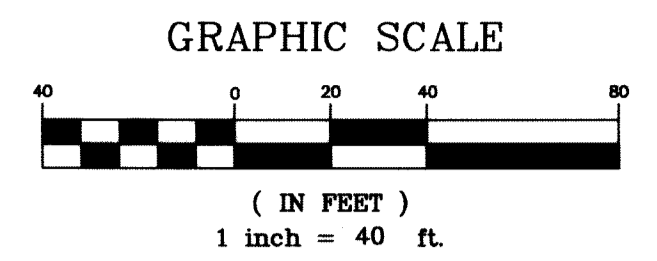


THIS INSTRUMENT PREPARED BY  
 PAUL J. KATREK  
 OF  
 CPH, INC.  
 LB# 7143  
 500 WEST FULTON STREET  
 SANFORD, FLORIDA 32771 - (407)322-6841

# GREENACRES TARGET REPLAT

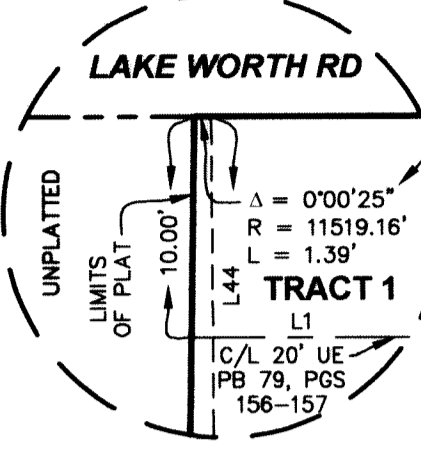
BEING A REPLAT OF GREENACRES TARGET, ACCORDING TO THE PLAT THEREOF,  
 AS RECORDED IN PLAT BOOK 79, PAGES 156 AND 157 OF THE PUBLIC RECORDS  
 OF PALM BEACH COUNTY, FLORIDA, LYING IN SECTION 26, TOWNSHIP 44 SOUTH,  
 RANGE 42 EAST, CITY OF GREENACRES, PALM BEACH COUNTY, FLORIDA



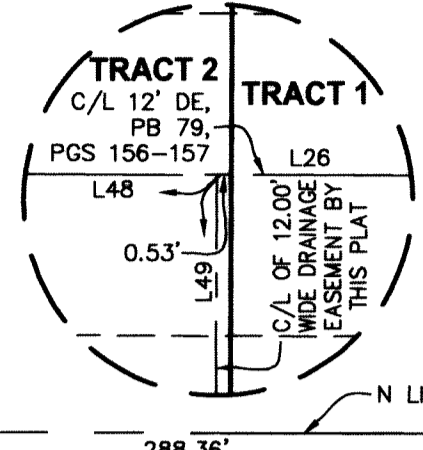
64

SHEET 2 OF 2

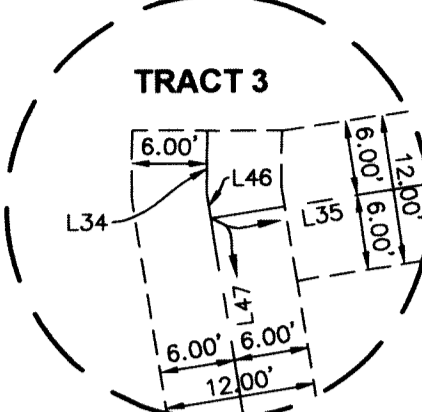
**DETAIL VIEW 'DE-1'**  
 NOT TO SCALE



**DETAIL VIEW 'DE-2'**  
 NOT TO SCALE



**DETAIL VIEW 'DE-3'**  
 NOT TO SCALE

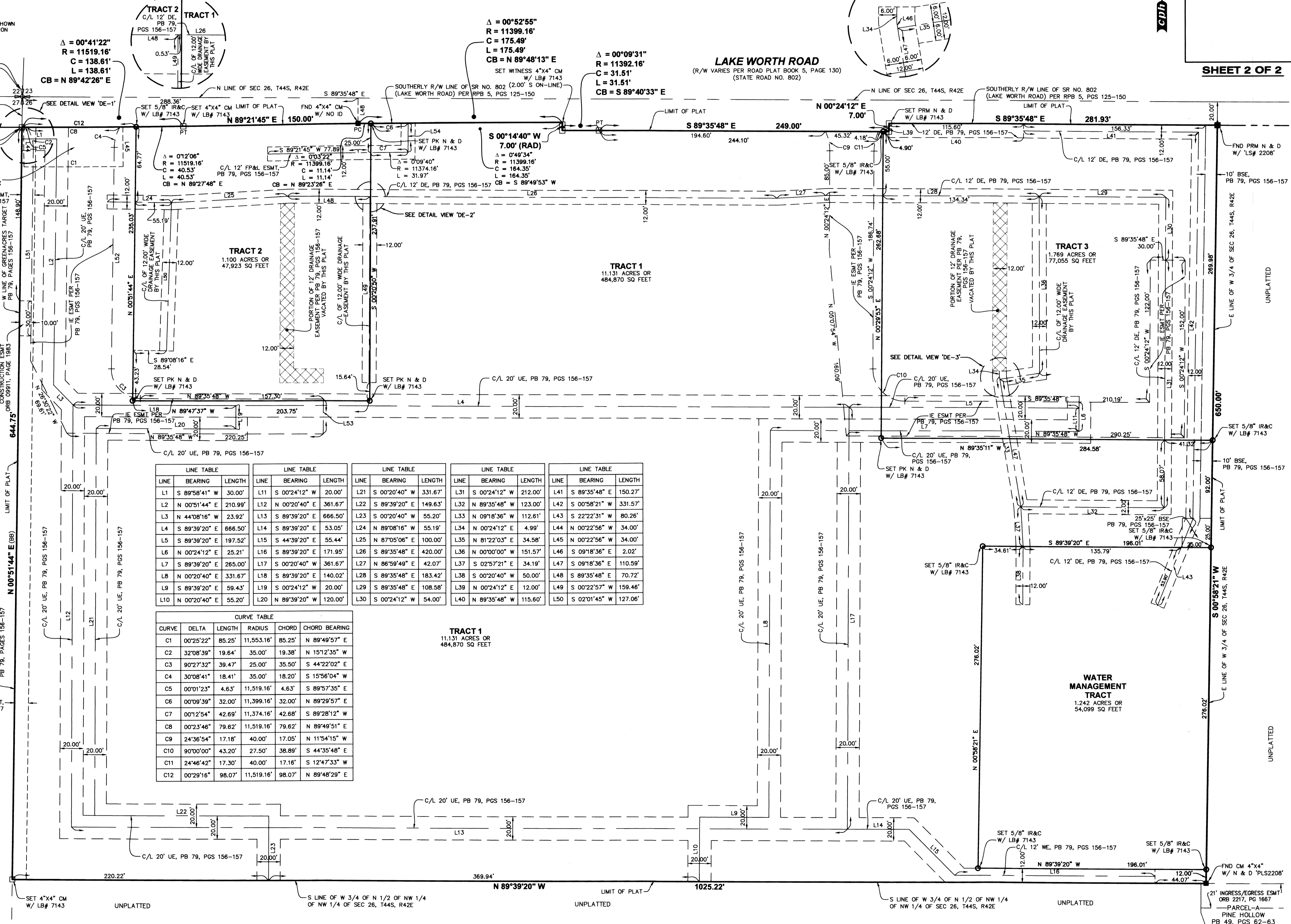


**SURVEY NOTES:**

- BEARINGS SHOWN HEREON ARE RELATIVE TO THE WEST LINE OF GREENACRES TARGET, ACCORDING TO THE PLAT THEREOF AS RECORDED IN PLAT BOOK 79, PAGES 156 THROUGH 157, OF THE PUBLIC RECORDS OF PALM BEACH COUNTY, FLORIDA, AS BEING N 00°51'44" E.
- DENOTES A SET PERMANENT REFERENCE MONUMENT, A 4 INCH BY 4 INCH CONCRETE MONUMENT WITH "LB# 7143 P.R.M." CAP UNLESS OTHERWISE NOTED.
- DENOTES A SET PK NAIL AND DISC, OR A 5/8" IRON ROD WITH A CAP, INSCRIBED "LB# 7143" IDENTIFIED AS SHOWN HEREON.
- DENOTES A FOUND PERMANENT REFERENCE MONUMENT, A 4 INCH BY 4 INCH CONCRETE MONUMENT IDENTIFIED AS SHOWN HEREON UNLESS OTHERWISE NOTED.
- ALL LINES ARE NON-RADIAL UNLESS OTHERWISE DENOTED AS (RAD).
- ALL DISTANCES SHOWN HEREON ARE IN U.S. SURVEY FEET AND DECIMALS THEREOF.
- ERROR OF CLOSURE DOES NOT EXCEED 1 FOOT IN 10,000 FEET.

**ABBREVIATION LEGEND:**

- (BB) - BEARING BASIS
- BSE - BELL SOUTH EASEMENT
- C - CHORD
- CB - CHORD BEARING
- C/L - CENTERLINE
- CM - CONCRETE MONUMENT
- CONC - CONCRETE
- COR - CORNER
- Δ - DELTA
- DE - DRAINAGE EASEMENT
- ESMT - EASEMENT
- FND - FOUND
- FP&L - FLORIDA POWER AND LIGHT
- ID - IDENTIFICATION
- IE - INGRESS/EGRESS
- IP - IRON PIPE
- IR - IRON ROD
- IR&C - IRON REBAR & CAP
- L - ARC LENGTH
- LB# - LICENSED BUSINESS NUMBER
- N & D - NAIL AND DISK
- ORB - OFFICIAL RECORDS BOOK
- PB - PLAT BOOK
- PT - POINT OF TANGENCY
- PG - PAGE
- PGS - PAGES
- PK - PARKER KAYLON
- PRM - PERMANENT REFERENCE MONUMENT
- PSM - PROFESSIONAL SURVEYOR & MAPPER
- PT - POINT OF TANGENCY
- R42E - RANGE 42 EAST
- R - RADIUS
- RAD - RADIAL
- RPB - ROAD PLAT BOOK
- R/W - RIGHT-OF-WAY
- SEC 26 - SECTION 26
- SQ FT - SQUARE FEET
- TYP - TYPICAL
- T44S - TOWNSHIP 44 SOUTH
- UE - UTILITY EASEMENT
- WE - WATER EASEMENT
- W - WITH



LINE	BEARING	LENGTH	LINE	BEARING	LENGTH	LINE	BEARING	LENGTH	LINE	BEARING	LENGTH	LINE	BEARING	LENGTH
L1	S 89°58'41" W	30.00'	L11	S 00°24'12" W	20.00'	L21	S 00°20'40" W	331.67'	L31	S 00°24'12" W	212.00'	L41	S 89°35'48" E	150.27'
L2	N 00°51'44" E	210.99'	L12	N 00°20'40" E	361.67'	L22	S 89°39'20" E	149.63'	L32	N 89°35'48" W	123.00'	L42	S 00°58'21" W	331.57'
L3	N 44°08'16" W	23.92'	L13	S 89°39'20" E	666.50'	L23	S 00°20'40" W	55.20'	L33	N 09°18'36" W	112.61'	L43	S 22°22'31" W	80.26'
L4	S 89°39'20" E	666.50'	L14	S 89°39'20" E	53.05'	L24	N 89°08'16" W	55.19'	L34	N 00°24'12" E	4.99'	L44	N 00°22'56" W	34.00'
L5	S 89°39'20" E	197.52'	L15	S 44°39'20" E	55.44'	L25	N 87°05'06" E	100.00'	L35	N 81°22'03" E	34.58'	L45	N 00°22'56" W	34.00'
L6	N 00°24'12" E	25.21'	L16	S 89°39'20" E	171.95'	L26	S 89°35'48" E	420.00'	L36	N 00°00'00" W	151.57'	L46	S 09°18'36" E	2.02'
L7	S 89°39'20" E	265.00'	L17	S 00°20'40" W	361.67'	L27	N 86°59'49" E	42.07'	L37	S 02°57'21" E	34.19'	L47	S 09°18'36" E	110.59'
L8	N 00°20'40" E	331.67'	L18	S 89°39'20" E	140.02'	L28	S 89°35'48" E	183.42'	L38	S 00°20'40" W	50.00'	L48	S 89°35'48" E	70.72'
L9	S 89°39'20" E	59.43'	L19	S 00°24'12" W	20.00'	L29	S 89°35'48" E	108.58'	L39	N 00°24'12" E	12.00'	L49	S 00°22'57" W	159.46'
L10	N 00°20'40" E	55.20'	L20	N 89°39'20" W	120.00'	L30	S 00°24'12" W	54.00'	L40	N 89°35'48" W	115.60'	L50	S 02°01'45" W	127.06'

CURVE	DELTA	LENGTH	RADIUS	CHORD	CHORD BEARING
C1	00°25'22"	85.25'	11,553.16'	85.25'	N 89°49'57" E
C2	32°08'39"	19.64'	35.00'	19.38'	N 151°2'35" W
C3	90°27'32"	39.47'	25.00'	35.50'	S 44°22'02" E
C4	30°08'41"	18.41'	35.00'	18.20'	S 15°56'04" W
C5	00°01'23"	4.63'	11,519.16'	4.63'	S 89°57'35" E
C6	00°09'39"	32.00'	11,399.16'	32.00'	N 89°29'57" E
C7	00°12'54"	42.69'	11,374.16'	42.68'	S 89°28'12" W
C8	00°23'46"	79.62'	11,519.16'	79.62'	N 89°49'51" E
C9	24°36'54"	17.18'	40.00'	17.05'	N 11°54'15" W
C10	90°00'00"	43.20'	27.50'	38.89'	S 44°35'48" E
C11	24°46'42"	17.30'	40.00'	17.16'	S 12°47'33" W
C12	00°29'16"	98.07'	11,519.16'	98.07'	N 89°48'29" E

**TRACT 1**  
 11.131 ACRES OR  
 484,870 SQ FEET

**WATER MANAGEMENT TRACT**  
 1.242 ACRES OR  
 54,099 SQ FEET